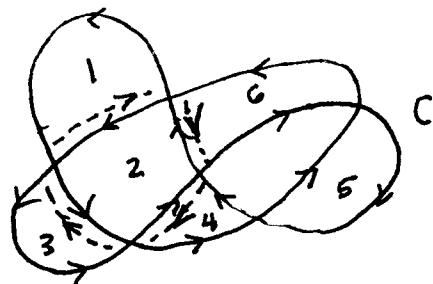
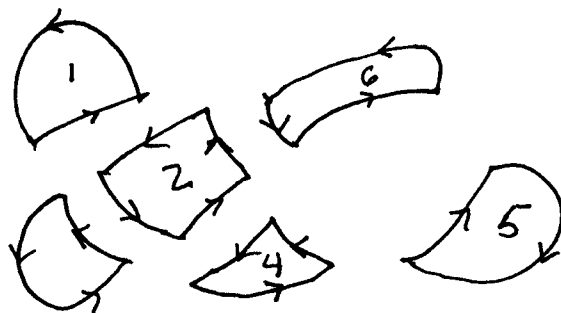


AN EXAMPLE OF HOW TO BREAK ANY CLOSED CONTOUR INTO SIMPLE CLOSED CONTOURS:



First add some paths to orient simple closed contours: we dotted these added paths in the figure above. Then we see the following breakdown of the oriented loops:



plus

a copy of 2 with ~~the same~~ ^{the same} ~~orientation~~ ^{opposite} orientation: as 2



to cancel the dotted arcs we added.

Since $\int_{C_j} f(z) dz = 0$ on each of the simple contours,
 $C_j; j=1,2,\dots,7$

then $\int_{C_1 + \dots + C_7} f dz = \int_C f(z) dz = 0$